



## 10 000 000Hz GPSDO 2.0 Reference from DXPatrol



*fig 1: front panel*

This is our new issue, a low cost GPSDO developed for the most rigorous and demanding microwave enthusiasts.

The DXpatrol GPSDO uses a internal GPS reference original U-Blox 7N controlling a 10Mhz CTI - OCXO 0,05ppb \* Square wave Oscillator

### Features:

- New Oled Display data presentation
- Ultra High accurate UTC Clock
- Local GPS coordinates presentation
- Number of satellites in range

- Wait / Lock indication.
- GPS, Galileu, Glonass receiver
- 4 ( 3+1) Outputs 10MHz 1.5vpp
- 3 Sine Wave outputs A+B+C ~ 7dBm
- 1 Square Wave output sqw
- Duty cycle 50%
- Phase Noise @ 1Hz -80dBc/Hz
- Phase Noise @ 10Hz -120dBc/Hz
- Phase Noise @ 1KHz -145dBc/Hz
- Phase Noise @ 10KHz – 150dBc/Hz
- Second harmonic < 51dBs
- Third harmonic < 56dBs
- Turn ON time ~ 5 minutes
- Working Temperature range 0°C to 75°C
- Operating Temperature ~50° C (OCXO)
- Supply voltage 8V to 14V
- Current 600mA first minute, 270mA after lock
- Dimensions metal case : 84mm / 71mm / 25mm



*fig 2: back panel.*



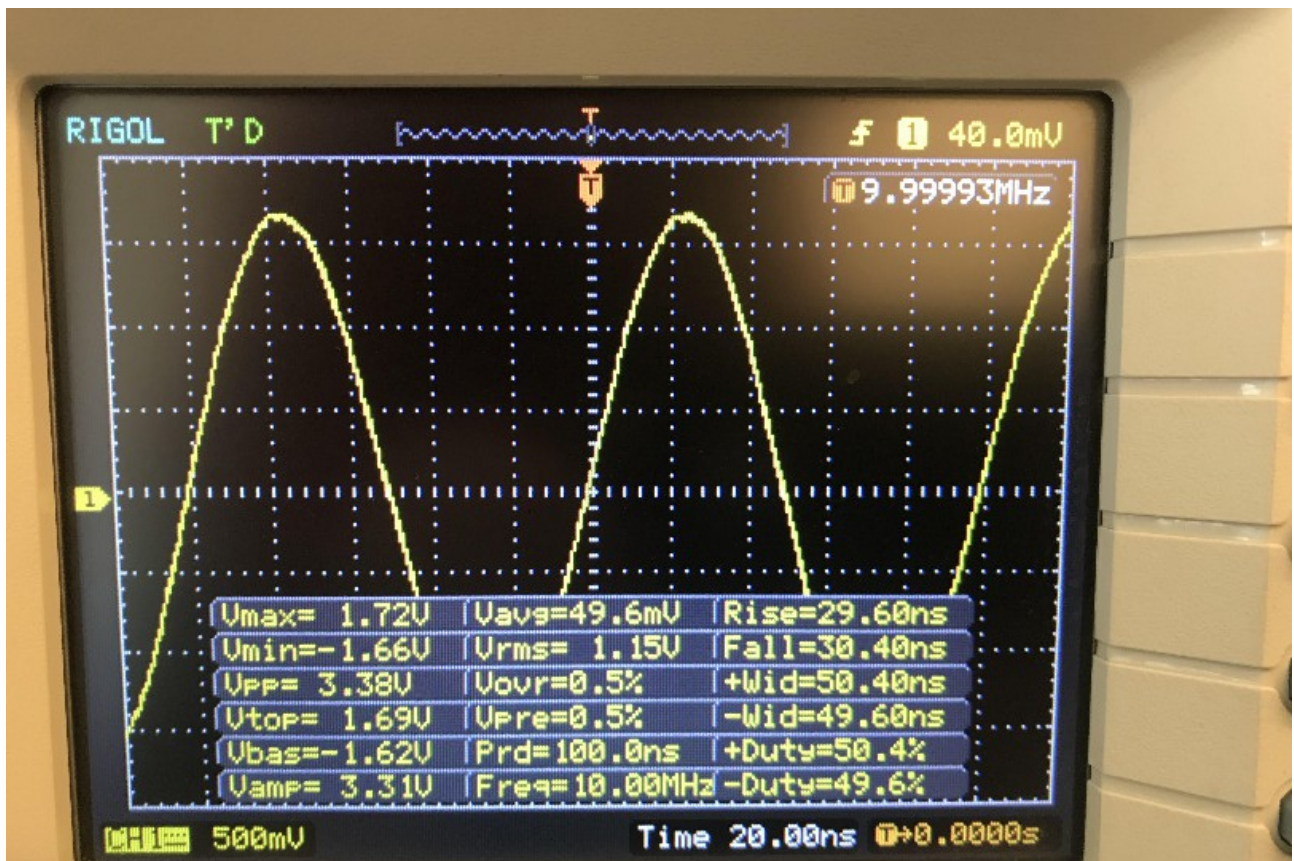


Fig 3: Sin Wave outputs ABC

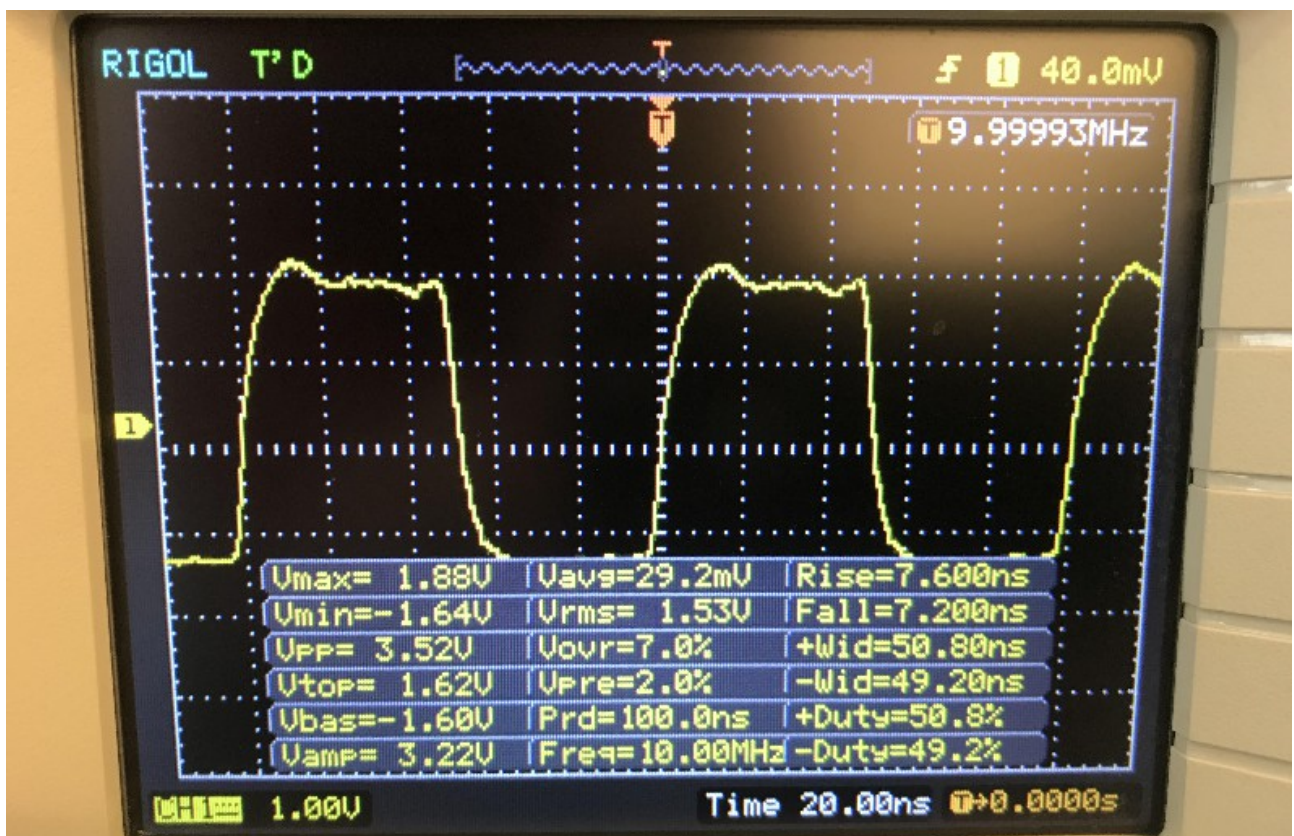


fig 4: Square Wave output

How it works.

New version 2.0 Dxpatrol GPSDO have a internal ATmega microprocessor programmed to communicate with Ublox module and present several GPS-NMEA informations on a Oled display.

Useful information as your local geographic coordinates, UTC high precision time Clock and the number of satellites in range.

The U-Blox GPS receiver is instructed by Atmega to generate a 1000PPS frequency on is output.

( Due the very high Jitter this modules produce, the signal sharpness was highly improved with a Schmitt Trigger to get a clean 1kHz square wave.)

The OCXO 10Mhz passes through a chain of dividers so we had a 1000Hz to compare on a Phase Lock loop CD4046.



*Fig 5: starting ON, no GPS received or no antenna connected.*





*Fig 6: UTC time clock detected, waiting for more satellites.*



*Fig 7: 6 satellites in range, clock and coordinates detected. OCXO warming up.*



Fig 8 : Lock complete, ready to use

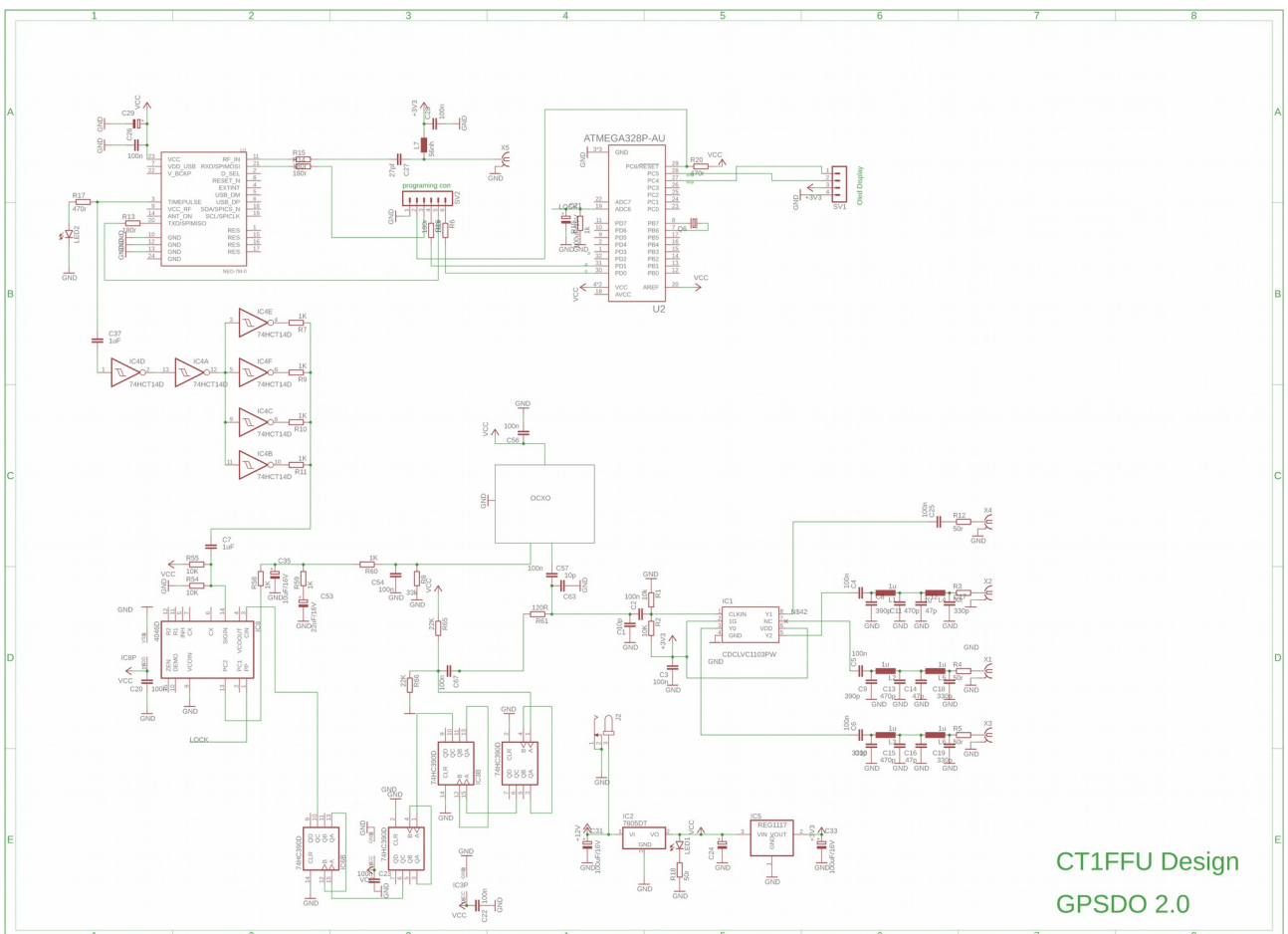


Fig 9 schematic

Operating.

This GPSDO is programmed in Hotstart mode. This means, even without antenna or any GPS signal received, the GPSDO will yet have a fair and accurate 10Mhz signal on it's outputs.

However, as we are using a internal OCXO, Oven Controlled Oscillator, the internal heater will take about 5 minutes to achieve the operating temperature – 50°C ( **this means you will feel the box a bit warm. That is normal**)

After connect the supply, the display will show the logo Dxpatrol for 2 seconds.

If any satellite is detected, UTC time will be shown, usually after 5 seconds.

Acquiring position will be displayed until valid coordinated is received from GPS.

OCXO Oven Oscillator will be in warming period for a few minutes and Wait flashing will be shown.

After a few minutes, Lock indication will take place and GPSDO is ready to use.

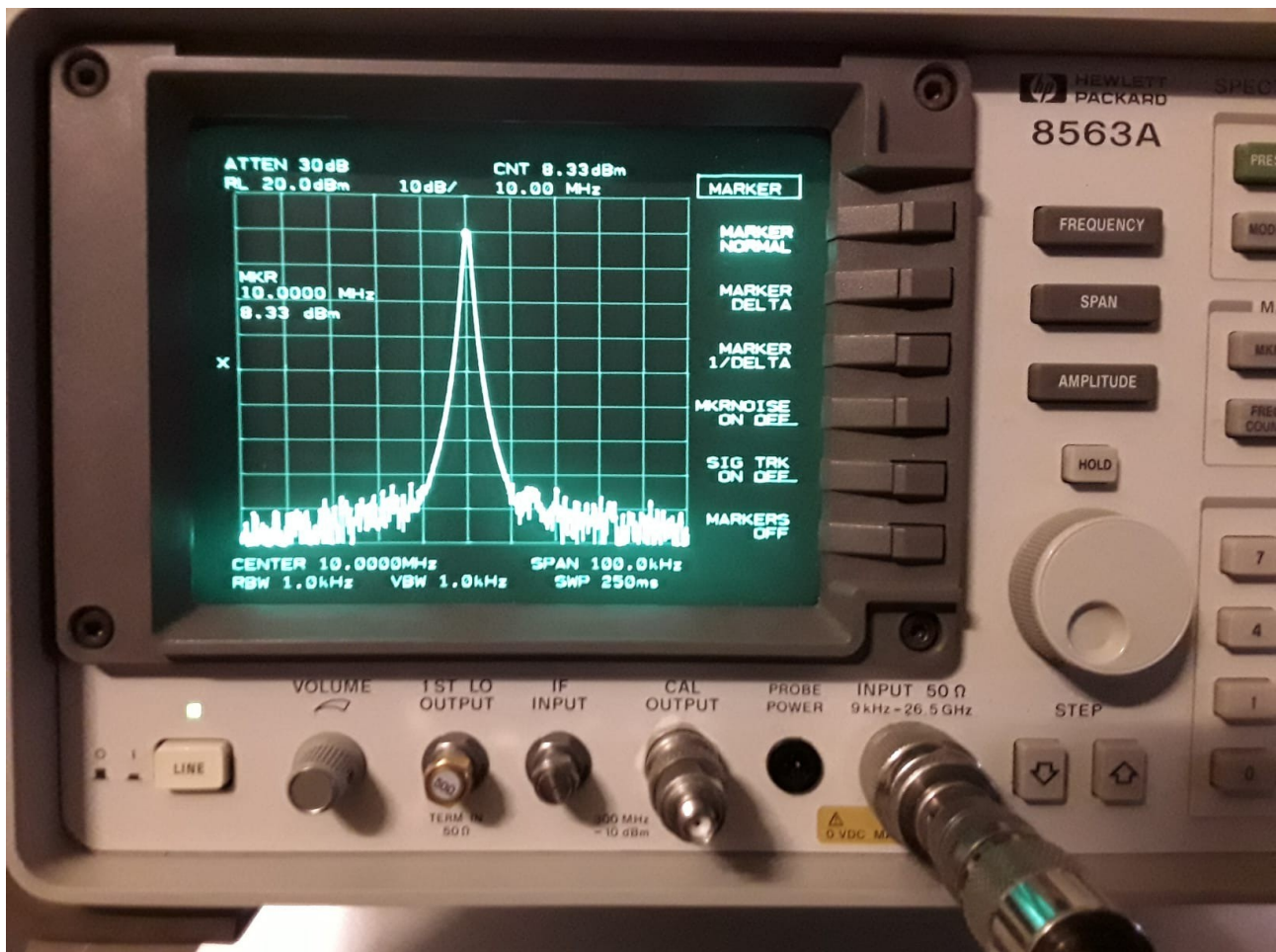


Fig 10: SA signal reading @ 100Khz span.



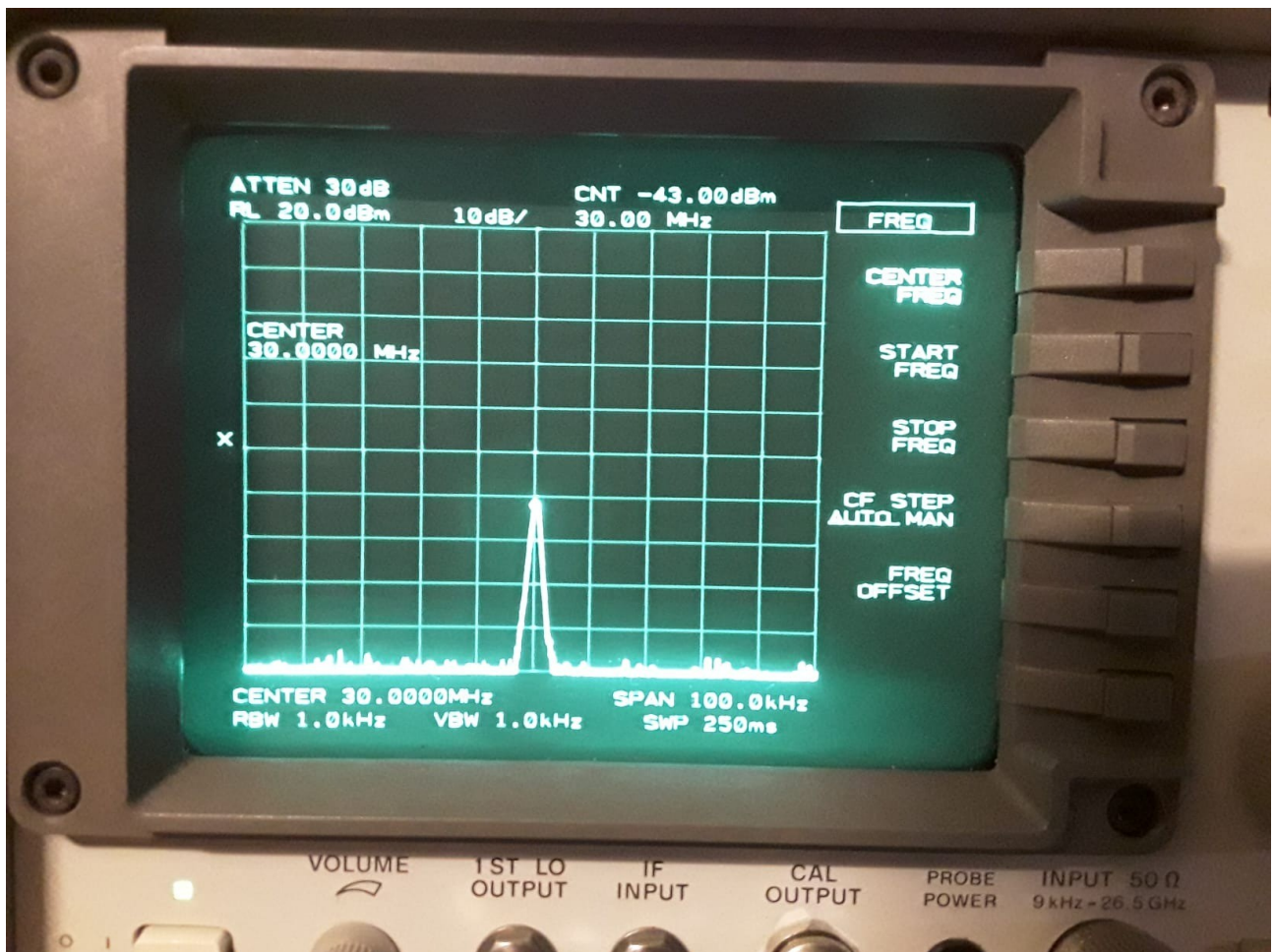


Fig 11 Second harmonic -43dBm



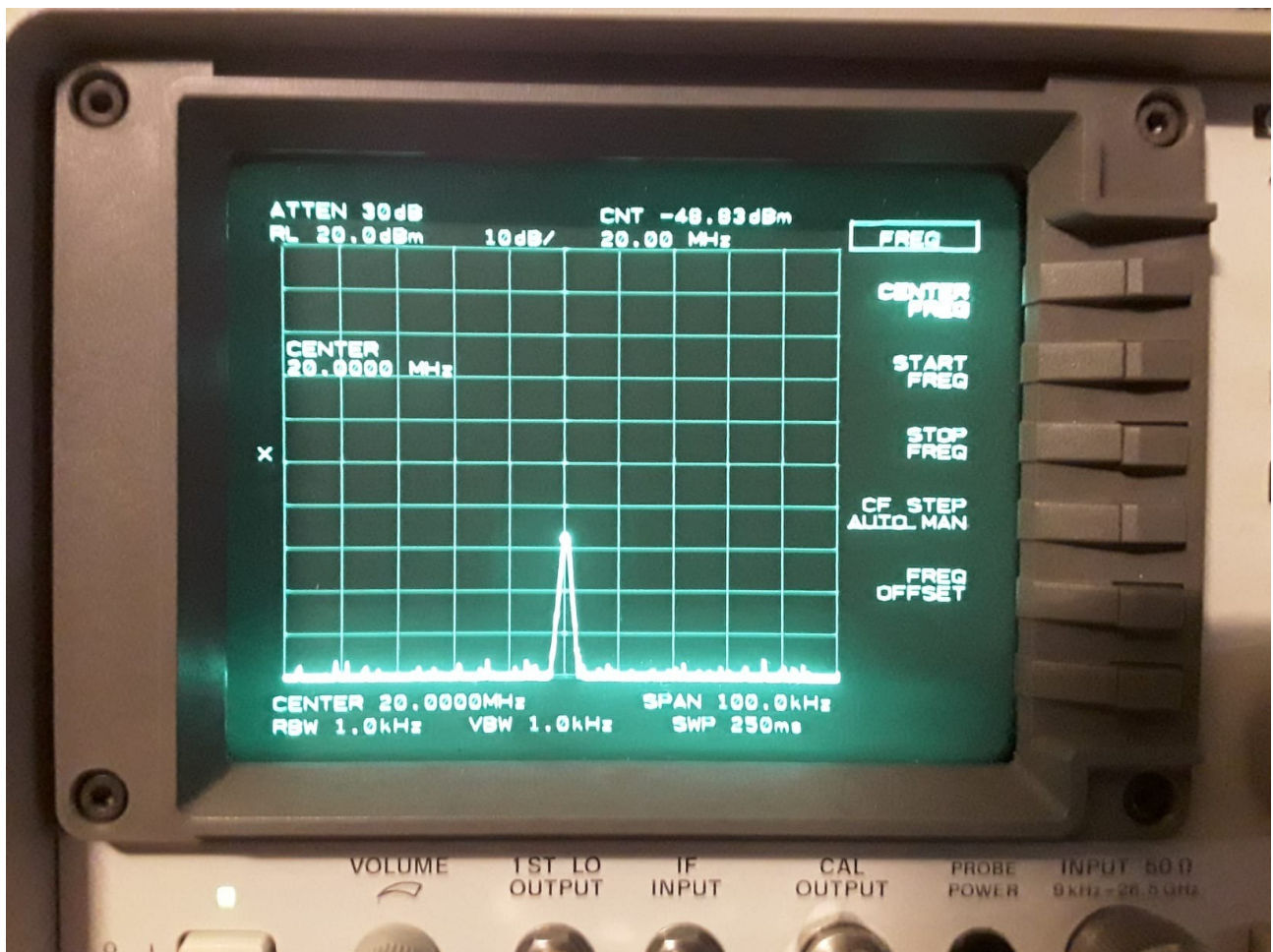


Fig 12 Third harmonic -49dBm

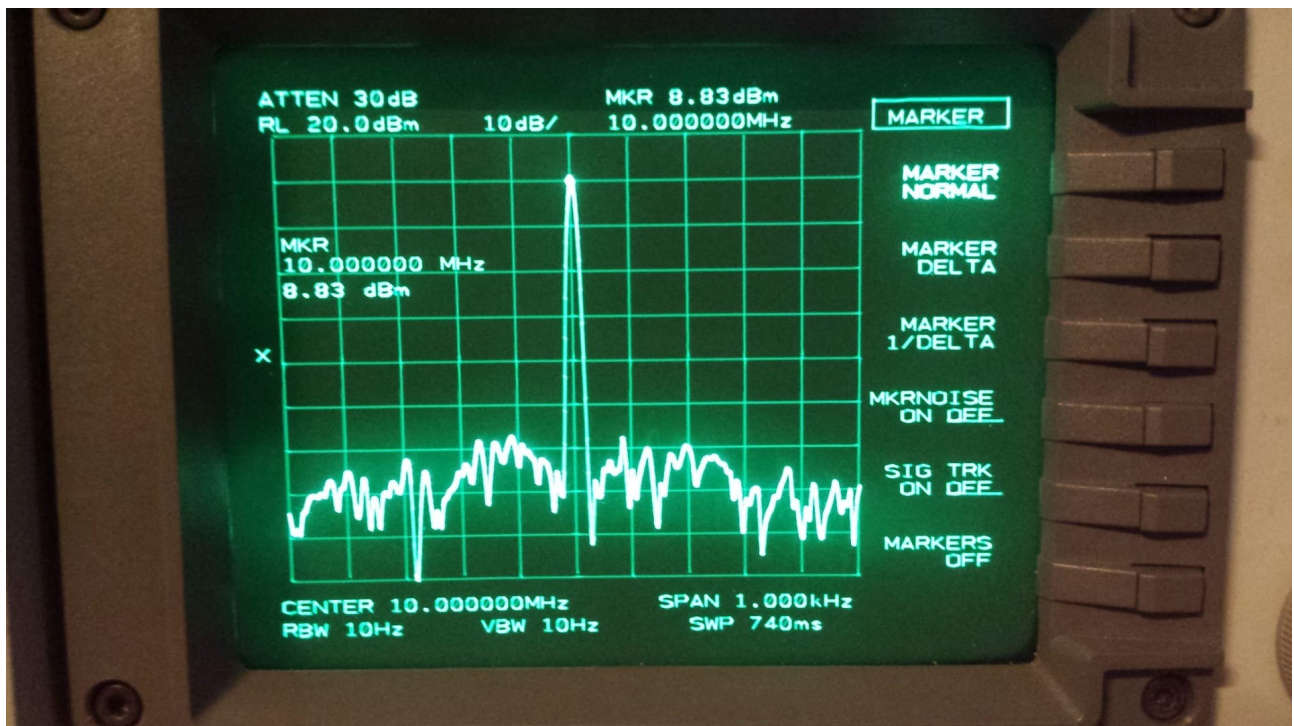


Fig 13 Frequency accurate

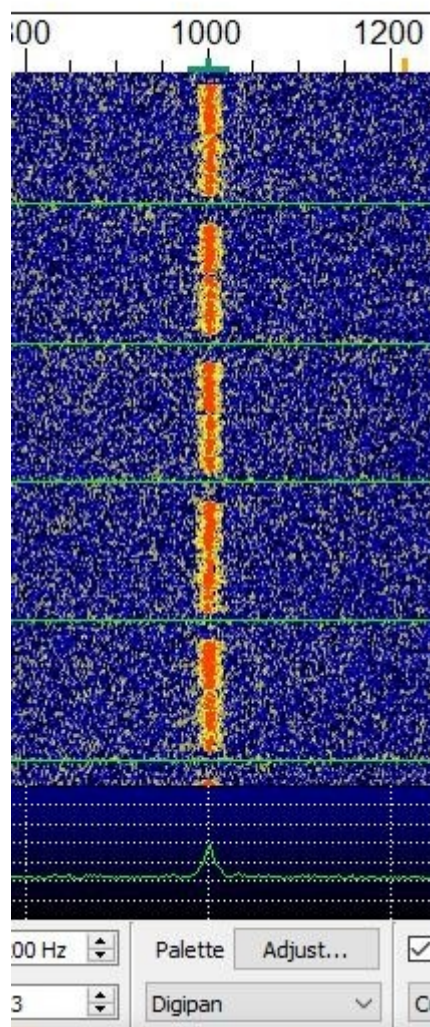


FIG 13 ON0EME reception using Dxpatrol GPSDO as reference.

António Matias

[www.dxpatrol.pt](http://www.dxpatrol.pt) technical mails [ctlfu@gmail.com](mailto:ctlfu@gmail.com) or commercial [sales@dxpatrol.pt](mailto:sales@dxpatrol.pt)